

23rd August 2017

SEAL REPLACEMENTS FOR LIQUIP'S FRONT AND HYDRAULIC "HP" SERIES HOSEREELS

Dear Valued Customers,

This bulletin provides details for seal replacements for Liquip's front and hydraulic "HP" SERIES Hosereels and "HP2" SERIES Hosereel Models.

The front rewind (FR Series) are a manual rewind and the hydraulic rewind (HR Series) are a hydraulic rewind. Both are suitable for petroleum & LPG products and are available in different sizes.

Seal Change out on Category 1 & 2 Models (FRxxHP & HRxxHP Series)

How do I know if my hose reel is a HP Series Model Hosereel?

HP model Hosereels are separated into 2 categories:

1. Category 1 HP Series – **NO GROOVE** on manifold drive shaft and **NO SPACER**.
2. Category 2 HP Series – **WITH GROOVE** on manifold drive shaft and **WITH SPACER**.

How do I change out seals on HP series model hosereels?

Seals can be changed on HP Series Hosereels by following the below procedures corresponding to the categories of HP series hosereel you have installed:

1. To download CATEGORY 1 HP Series with no groove on manifold drive shaft and no spacer seal changeout procedure please click [HERE](#).
2. To download CATEGORY 2 HP Series with groove on manifold drive shaft and spacer seal changeout procedure please click [HERE](#).

Seal Change out on Category 3 HP2 Models (FRxxHP2 & HRxxHP2 Series)

How do I know if my hose reel is a HP2 Series model?

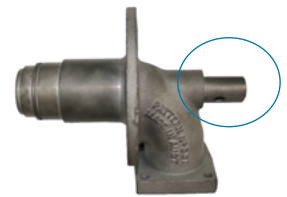
Category 3 HPs Series - HP2 model Hosereels can be identified by the **LETTER "A"** that is clearly marked on the flange and manifold (as illustrated).

How do I change out seals on legacy model hosereels?

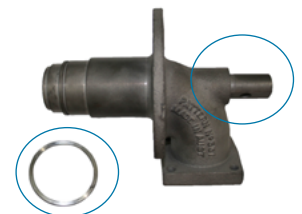
Seals can be changed on HP2 Series hosereels by following the procedure seals please follow the Seal change out procedure by clicking [HERE](#).

PLEASE NOTE:

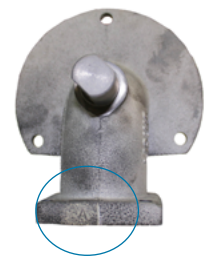
- Category 3 o-ring, v-seal sizes are different from Category 1 and 2.
- Category 3 manifold and flange are different machining than Category 1 and 2.
- O-ring, v-seal, flange and manifold for Category 3 are NOT backwards compatible or interchangeable to Category 1 or 2.
- Category 1 manifold can be upgraded to a Category 2 manifold and new spacer added using the same flange.
- The "A" for Category 3 is also stamped onto the flange as well as the manifold.
- When removing the Cat 1 or 2 flange and fitting a Cat 3 flange, it is recommended that installers weld the Cat 3 flange directly to new pipe material and then to the existing pipe to limit welding onto heat affected material.



NO GROOVE on manifold drive shaft and NO SPACER



WITH GROOVE on manifold drive shaft and WITH SPACER



LETTER A on manifold

