

# ITV4 Series Internal Chemical Valve

## Stainless Steel Valve with Teflon Trim for Mild Chemicals

This unit is constructed of stainless steel components and provides a non-contaminating valve for use with a wide range of chemical products.

Tapered seat provides improved sealing with Teflon.

Teflon seals are available in basic form for top operation or with bottom operating elbow.

## Technical Information

- Opens under 35 kPa pressure from below.
- Permissible lift 50mm.
- All components are stainless steel. E.g. Spring retainer, poppet and seat.
- All Teflon seals.
- Tank weld flange supplied separately.
- Weight – 1.8kg.



## Ordering Information

- ITV4-B-ST-316\* - Internal Chemical Valve.

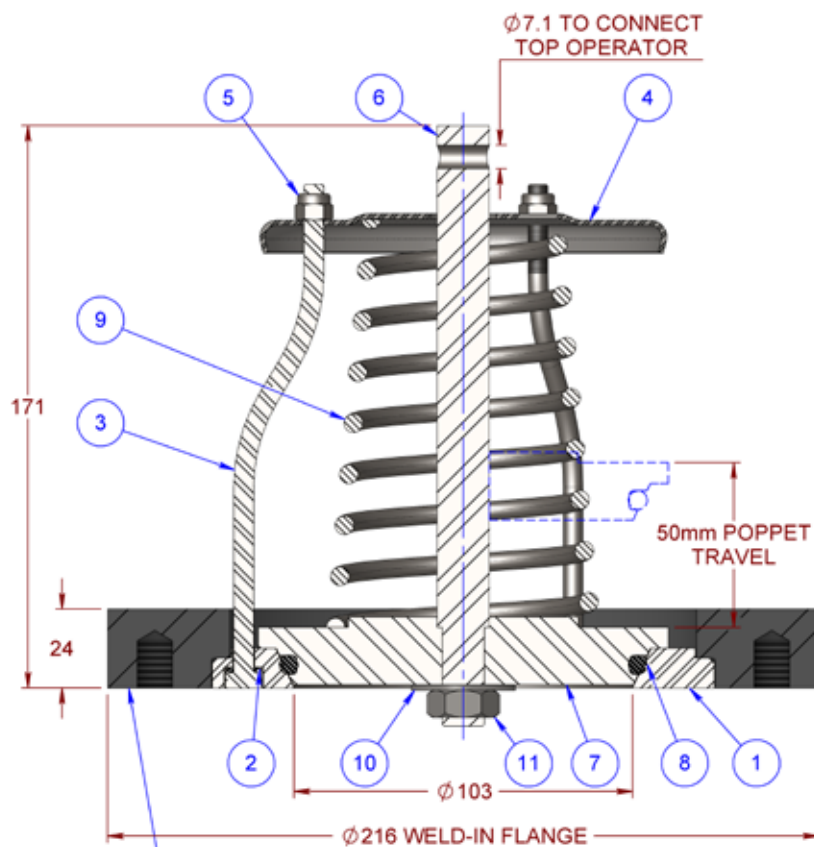
## Related Equipment

- SE4\* - Outlet elbows (plain).
- OLE4\* - Outlet elbows (operating).
- CL401RST316\* - Stainless Steel Top Operators.
- ITV4-14\* - Deflector.
- LW410 - Lifting Wire.

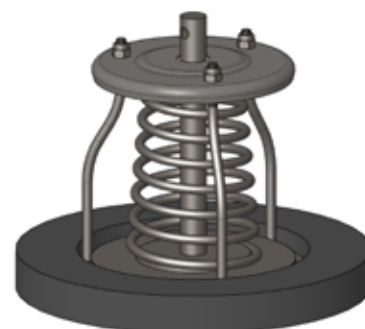
### Notes

\* Parts are made to order and hold minimum order quantities. Please consult Liquip for further information.

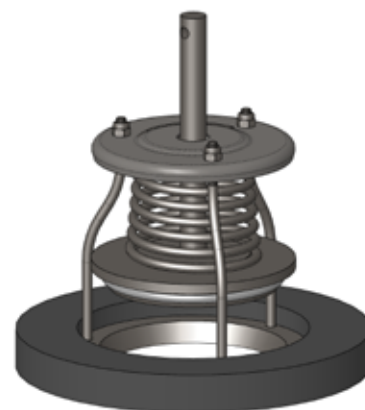
# ITV4-B-ST316 CHEMICAL INTERNAL VALVE



TANK WELD FLANGE SUPPLIED SEPARATELY  
 ITV4-1SX1 STAINLESS STEEL GRADE 304  
 6 OFF 1/2" BSW x 1/2" DEEP THREADS  
 ON A 187.3 PCD  
 FIT 4296 EXPANDED PTFE GASKET  
 BETWEEN THIS AND MOUNTING FLANGE



VALVE CLOSED



VALVE OPEN

CAN BE TOP OPERATED BY CABLE OR  
 BY 35kPa PRESSURE FROM BELOW

ITEM	PART No	DESCRIPTION	QTY	MATERIAL	GRADE
1	ITV4-5ST316	TAPERED VALVE SEAT	1	ST STEEL	316
2	0216	O-RING	3	TEFLON	
3	ITV4-7S316	SUPPORT ROD	3	ST STEEL	316
4	ITV4-16S316	SPRING RETAINER	1	ST STEEL	316
5	55095	NUT GLENLOCH	3	ST STEEL	316
6	ITV4-8ST316	SPINDLE FOR ITV4	1	ST STEEL	316
7	ITV4-15ST316	POPPET MAIN FOR ITV4	1	ST STEEL	316
8	2480	O-RING	1	TEF-ENC	
9	0283	SPRING COMPRESSION	1	ST STEEL	316
10	4355	WASHER FLAT	1	ST STEEL	316
11	0805	NUT - HALF	1	ST STEEL	316